

For queries contact Medicines Optimisation in Care Homes teams via:
BaNES- BSWCCG.banes.moch@nhs.net
Swindon- BSWCCG.swindon.moch@nhs.net or 01793 987667
Wiltshire- BSWCCG.wiltshire.moch@nhs.net

Care Home Monthly Order Process

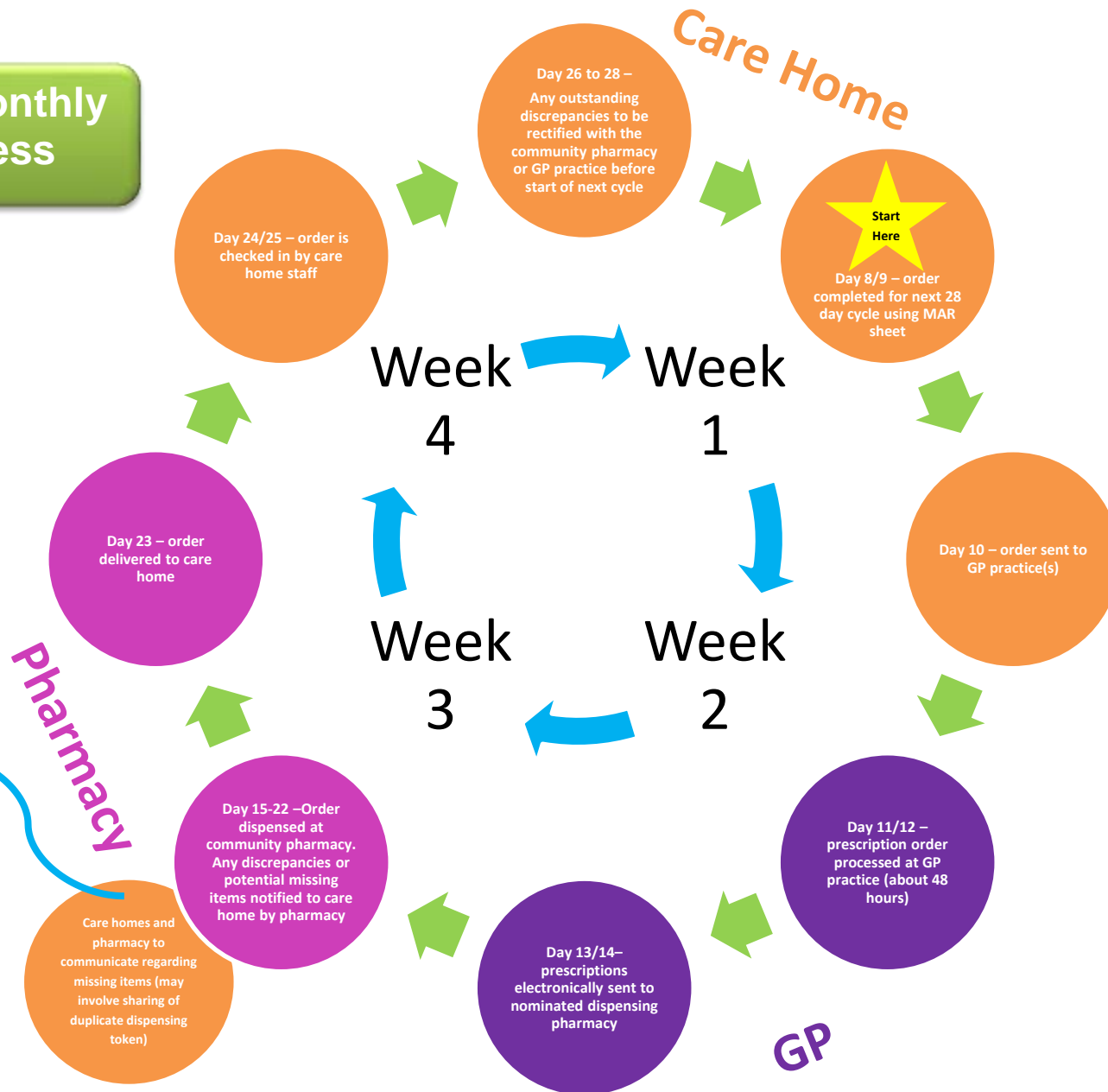
MOCH

Medicines Optimisation in Care Homes

Day 15-22 – Order processed at community pharmacy

- MAR sheets and labels generated
- Drugs dispensed into blister packs
- Liquids, when required medication and sundries dispensed and labelled
- Full order checked by pharmacist/checking technician

Note – this part of the cycle may be delayed due to problems with availability of stock



Please note:
This is a guide only;
timeframes may differ for your local pharmacy