

OptimiseRx Prescribers User Guide for SystemOne

OptimiseRx

Fully integrated with the patient record to enable the delivery of prescribing best practice and to optimise cost savings.



At a Glance

OptimiseRx delivers Best Practice, Safety and Cost Swap reference messages directly into the prescribing workflow. It is fully integrated with the patient record and can assist in the delivery of increased / high message acceptance rates by providing suggestions for alternative medications which may be clinically appropriate for each individual patient according to their clinical record. Alternative suggestions are pre-screened for drug-drug interactions, contraindications and patient sensitivities as per the coded entries in the patient record.

Prerequisites

OptimiseRx must be activated within your practice before it is available within SystemOne, please see the "Installation Guide - SystemOne" for details of how to activate OptimiseRx. This guide is available from your CCG.

Prescribing Workflow

OptimiseRx is fully integrated into the prescribing workflow within SystemOne. Messages are only triggered when the patient's demographic details and history of medications, conditions and test results all combine to flag a message as appropriate to that specific patient at that point in time.

Examples of the patient attributes that are analysed to trigger a given message can include:

Age, Gender, Medication history, Historical conditions, Presenting complaint, Allergies, Measures and observations, Dosing regimens, BMI, Blood pressure, FEV1, Red blood cell count, Cardiovascular risk, Cholesterol, Ethnicity, Neutrophil count, Creatinine clearance, DEXA T-Score.

Best Practice and Safety Messages

Messages relating to Best Practice, Safety, Therapeutic Interchanges and any messages with multiple alternatives are triggered at the point of entering a new medication into the prescribing window. Once a drug is selected the patient's profile is analysed and any appropriate messages are returned.

These messages provide links out to the authoritative source of the guidance or safety indicator displayed so that the prescriber has access to the original source of the guidance. The message might suggest multiple alternative medications that may be used instead of the original medication and, subject to CCG conditions, these may be filtered so that only those medications that are locally approved can be selected from this screen.

Figure 1 on the following page details the various aspects of the Best Practice dialog box and the actions that can be taken.

Disclaimer: The OptimiseRx module is intended for the use of healthcare professionals and provided on the basis that the healthcare professionals will retain FULL and SOLE responsibility for deciding what treatment to prescribe or dispense for any particular patient or circumstance.

OptimiseRx Prescribers User Guide for SystmOne

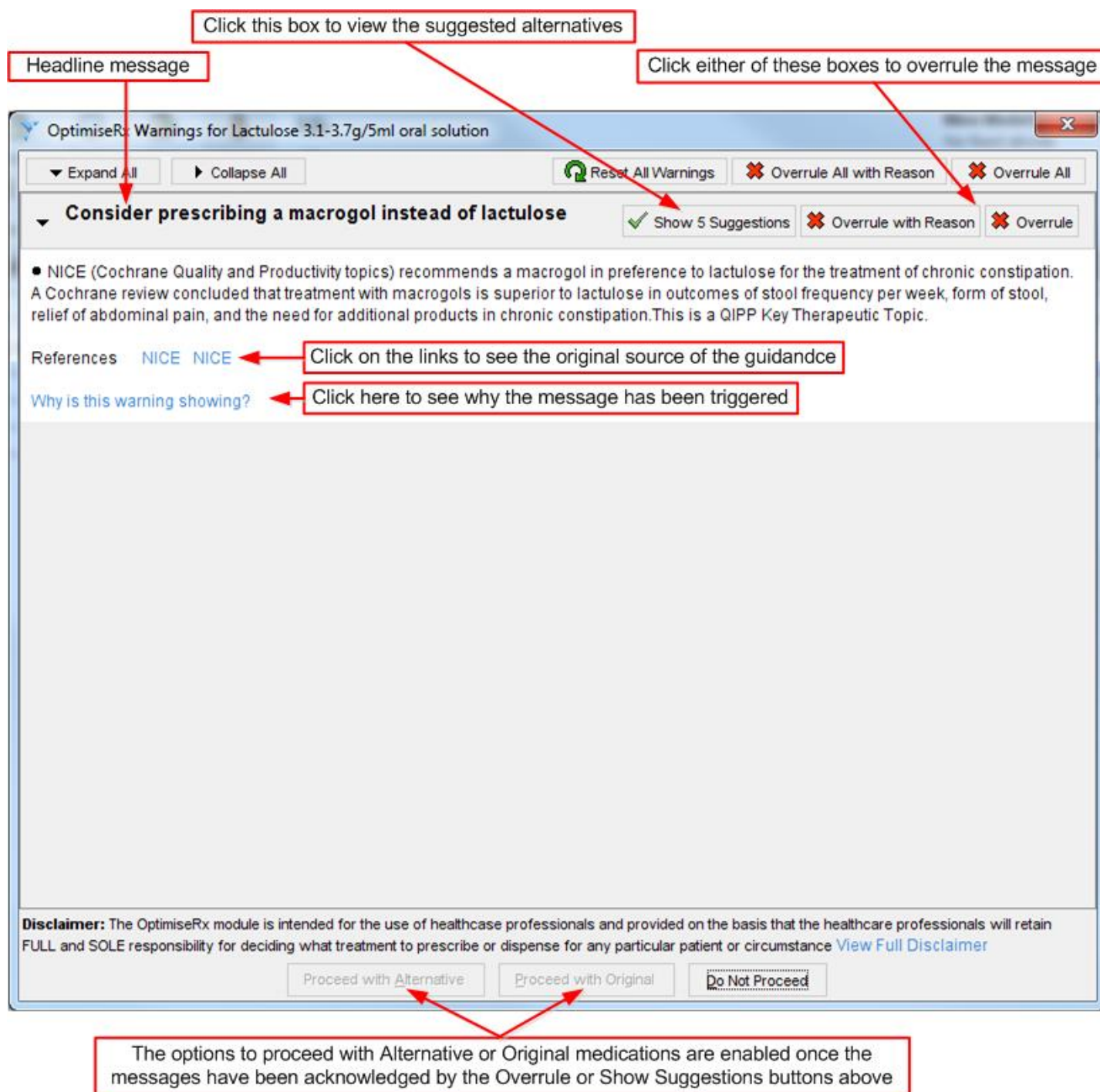


Figure 1 : Best Practice dialog box

As seen in Figure 1 above, OptimiseRx messages are structured to provide:

- **Headline message** text so the key message is rapidly understood;
- **Brief description** or summary of the guidance allowing the prescriber to summarise and become familiar with the guidance without needing to click further;
- **Access to the local or national guidance** via direct hyperlinks to the authoritative source of the guidance, providing additional detail via a single click to validate the relevance to an individual patient.
- The **patient attributes** in the record which led to the message being presented, accessed via the 'Why is this warning showing?' hyperlink.

To ACCEPT a Best Practice Message with Alternative Suggestions

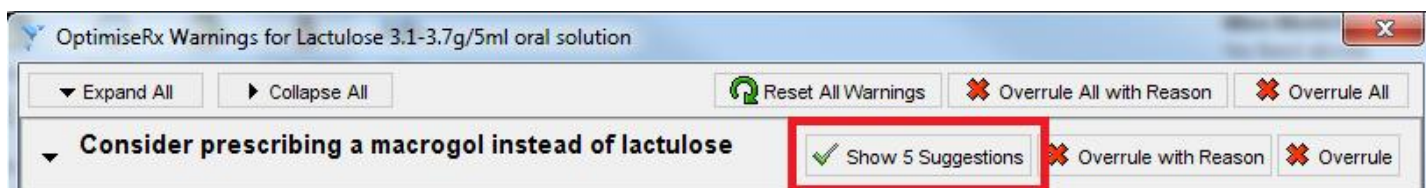


Figure 2 : Show alternative suggestions

1. Click 'Show Suggestions' button as shown in Figure 2 above
2. The alternatives dialog box is then shown, as in Figure 3 below
3. Select the alternative you wish to proceed with and click 'Ok'

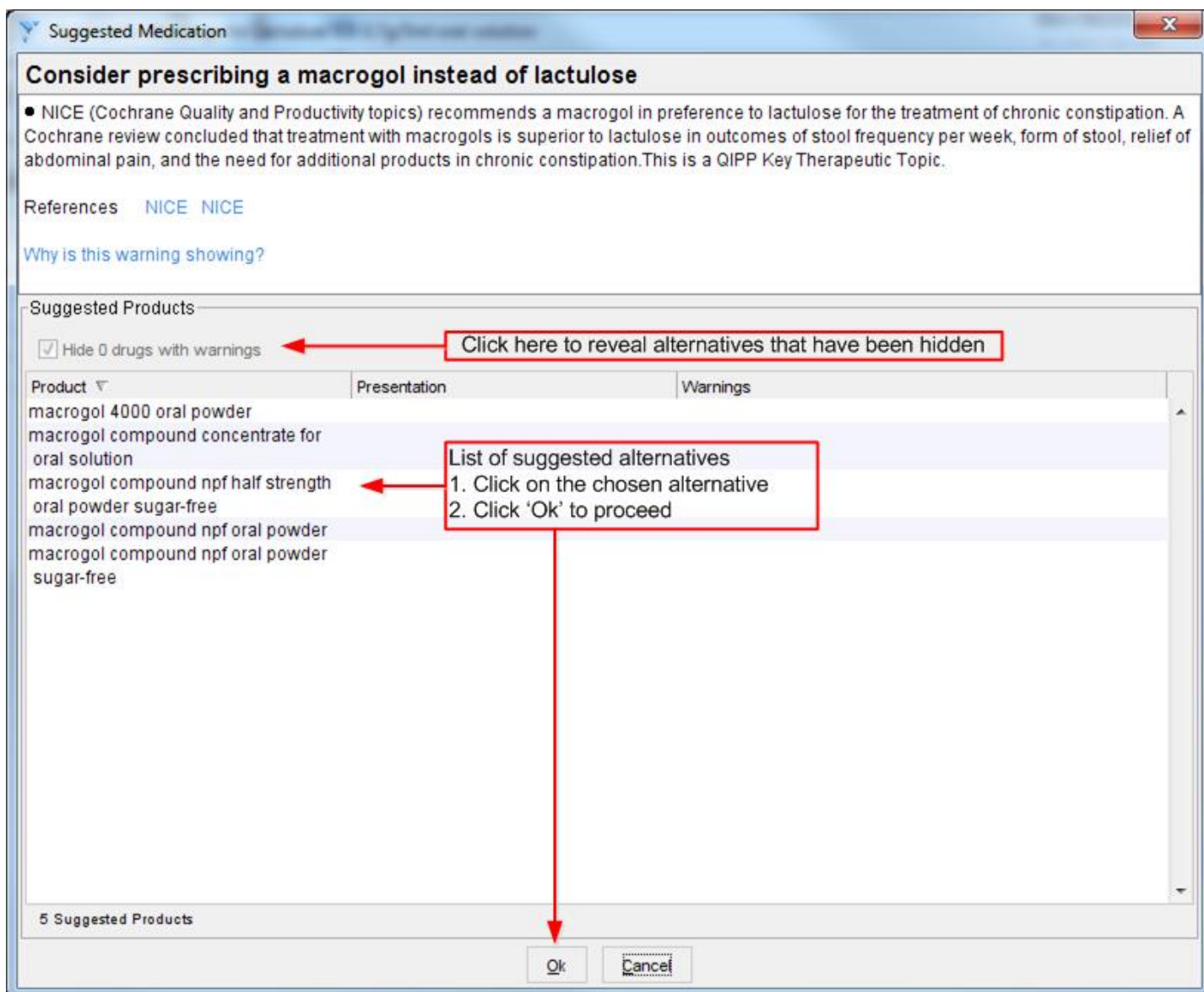


Figure 3 : List of alternative suggestions

Hidden Alternatives

As noted in figure 3 above (page 4) SystmOne will hide medicines from the list of alternatives where those medicines have been identified as having warnings associated with them. The warnings are triggered by data explicitly coded within the patient record, and take the form of drug-drug interactions, contraindicated medicines and patient sensitivities.

In order to make the hidden medicines selectable you must first unhide them, this is achieved by clicking on the tick-box titled 'Hide *n* drugs with warnings', this will un-tick the box and the hidden alternatives will be shown.

Suggested Medication

Consider prescribing simvastatin, or other low cost statin

- NICE guidance for Type 2 diabetes (CG87) recommends that patients with type II diabetes who are over 40 years of age should be offered primary CVD prevention. Treatment should be initiated with generic simvastatin (to 40mg) or a statin of similar efficacy and cost. Individuals with a low non-hyperglycaemia related CV risk should be assessed using the UKPDS risk engine and treated if their 10-year CV risk exceeds 20%.
- QIPP recommends that prescribing of lipid lowering agents is reviewed to ensure it is in line with NICE guidance.

References [NICE](#) [NICE](#) [Diabetes Trial Unit](#)

[Why is this warning showing?](#)

Suggested Products

Hide 5 drugs with warnings

Product	Presentation	Warnings
simvastatin	10mg tablets	CONDITION: Renal impairment - creatinine clearance below 30 ml/minute
simvastatin	20mg tablets	CONDITION: Renal impairment - creatinine clearance below 30 ml/minute
simvastatin	20mg/5ml oral suspension sugar-free	CONDITION: Renal impairment - creatinine clearance below 30 ml/minute
simvastatin	40mg tablets	CONDITION: Renal impairment - creatinine clearance below 30 ml/minute
simvastatin	40mg/5ml oral suspension	CONDITION: Renal impairment - creatinine clearance below 30 ml/minute

5 Suggested Products

Ok Cancel

Figure 4 : Selecting hidden alternative suggestions

To REJECT a Best Practice Message

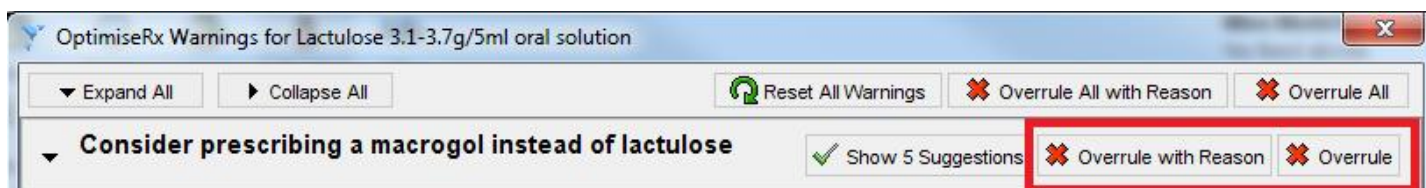


Figure 5 : Overrule a message

To reject a message you can either:

- Overrule the message

Or...

- Overrule the message with a reason, whereby you can either:
 - Choose from one of the pre-defined reasons (Figure 6 below)
 - Select 'Other Reason' and key in your own reasons for overruling the message

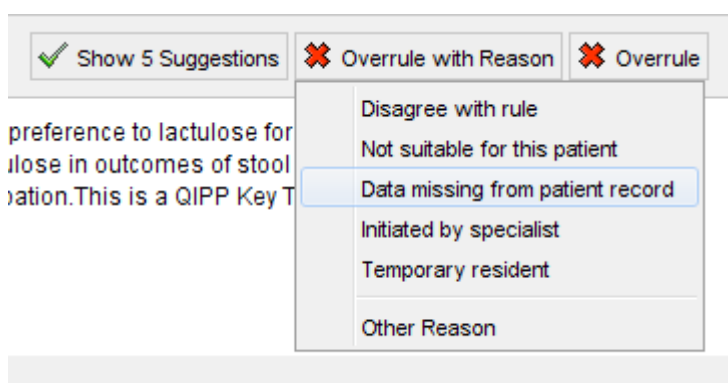


Figure 6 : Overrule a message with a given reason

All overruled message reasons are visible by the CCG, this is a valuable communication tool to assist in facilitating messages you are presented with are appropriate for your patient population.

Cost Messages

These messages inform you that a single cheaper alternative is available based on the potential savings that can be made. Suggested alternatives are validated for clinical appropriateness according to the coded patient record and may be filtered to include only those medications that are locally approved.

These messages use the total dosing supply quantity to calculate the savings, they will be triggered once the issue duration has been completed.

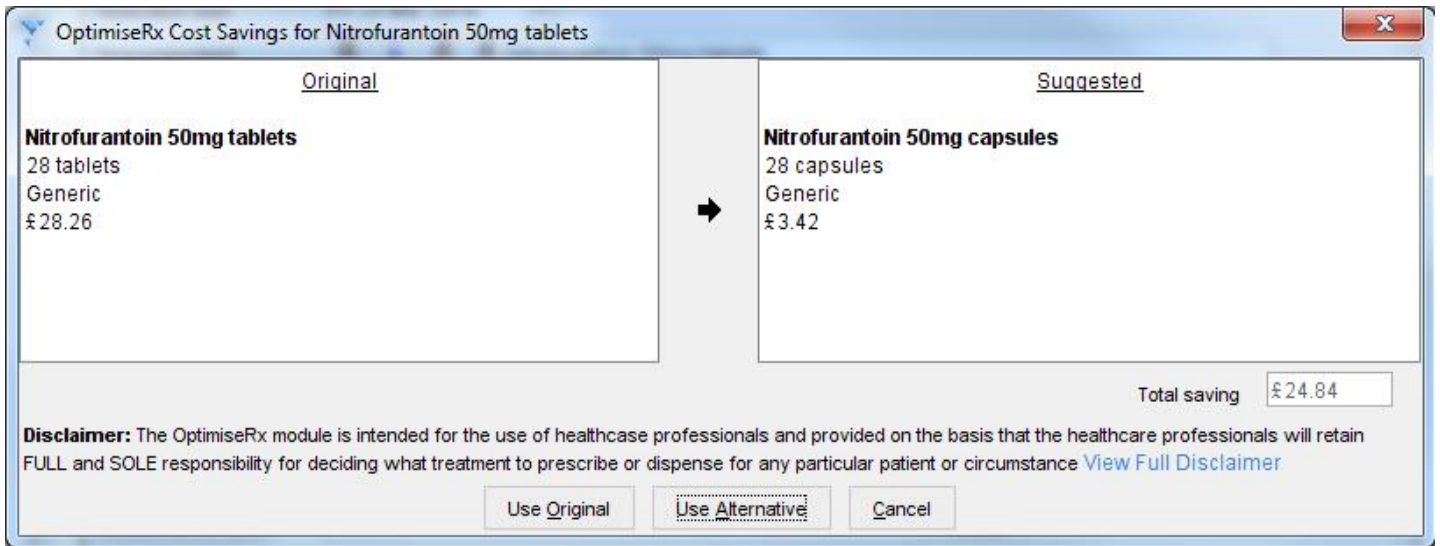


Figure 7 : Cost message

- To proceed with the alternative click the 'Use Alternative' button, the suggested drug will replace the original drug in the prescribing screen, proceed as normal to complete the prescription.
- Selecting the 'Use Original' button will ignore the message and proceed to prescribe the original drug.

RAG / Formulary Messages

If your CCG has chosen to implement messages to support the local formulary, you may see these messages appear in a similar fashion to the image below:

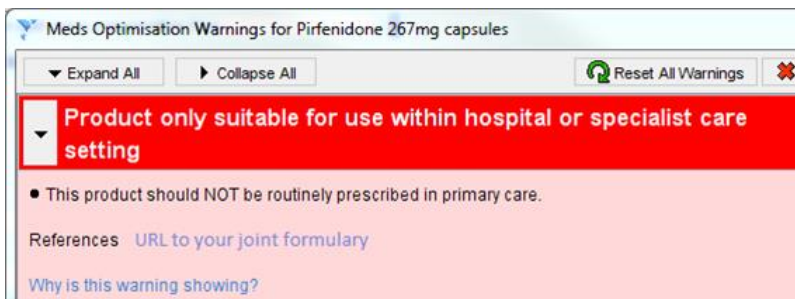


Figure 8 : Example of a Red RAG status formulary message

This example shows a red banner indicating the drug should not be routinely prescribed in primary care. The message may include a link to the local formulary allowing you to quickly access the full formulary for further information as required.

Using the FDB ORx (OptimiseRx) Button

OptimiseRx can be run against any given patient outside of the prescribing workflow, supporting medicines use review and allowing prescribers to identify opportunities for optimising all current prescriptions for any given patient, a useful analysis tool for complex multi-morbidity and polypharmacy patients.

The OptimiseRx button needs to be configured before use, please see the “Installation Guide—SystemOne” for details of how to achieve this. This guide is available from your CCG.

Using the OptimiseRx button

Once the button has been installed, load a patient record into SystemOne and simply click on the button:

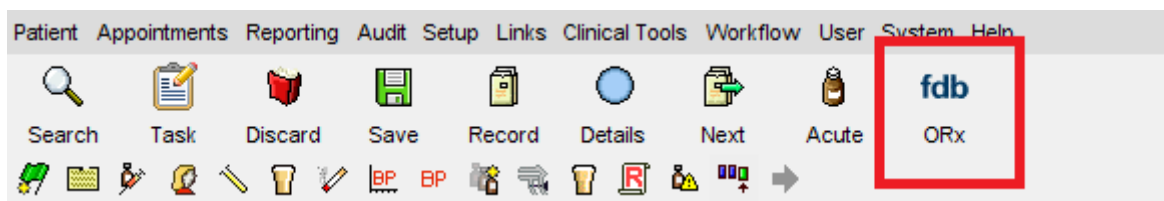


Figure 9 : OptimiseRx button added to the toolbar

This will review the patient record against all OptimiseRx messages and return the results to you in a summary window. The screen shot below shows two messages have been returned, one relating to the patients current repeat medications and one suggesting a new medication to commence, this is based on the details present in the patient’s medical record:



Figure 10 : Results screen

OptimiseRx Prescribers User Guide for SystemOne

To view the details for each item returned click on the relevant action box beside the message, the action box may represent a Best Practice message or a Cost related message:



Figure 11 : Accessing the details behind the summary result messages

Clicking on the action button (as highlighted above) will open the message dialog in the same manner as the messages presented within the prescribing workflow, along with all appropriate options to enable prescriptions to be raised by accepting the message.

If there are no results to return for a patient the following notification box will be shown:

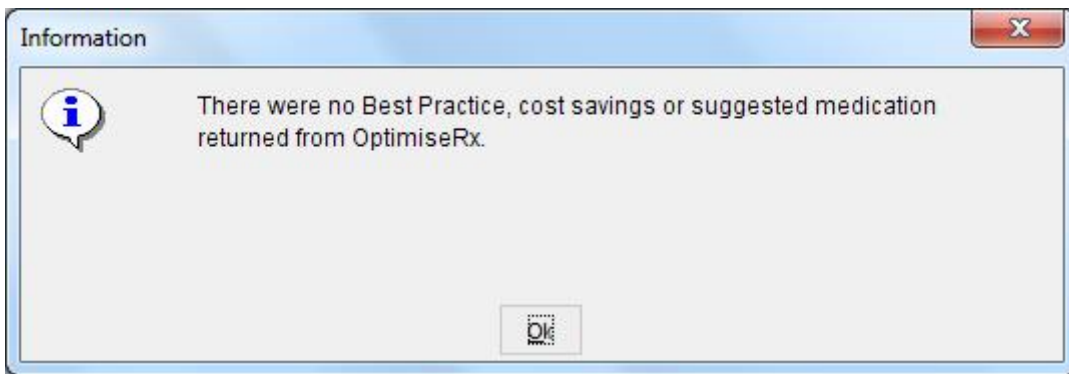


Figure 12 : No results

Support

If your query is in relation to any clinical material or information you should refer to your Medicines Management Team at your CCG.

If your query is related to system functionality or SystemOne itself please follow your local helpdesk procedures.

Visit fdbhealth.co.uk

First Databank (FDB), a subsidiary of Hearst Corporation, is the UK's leading provider of drug knowledge bases and active clinical decision support.

As the company that helped to launch the medication decision support industry, we offer more than three decades of experience in helping transform drug knowledge into actionable, targeted and effective solutions geared to improving patient care, patient safety and outcomes.



OptimiseRx

Swallowtail House, Grenadier Road, Exeter Business Park, Exeter EX1 3LH
Tel +44 (0) 1392 440 100 • Fax +44 (0) 1392 440 192 • fdbhealth.co.uk
Other Locations: San Francisco, California • Indianapolis, Indiana • St. Louis, Missouri



NICE has accredited the process used by First Databank to develop content used in Multilex drug knowledge. More information on accreditation can be found at www.nice.org.uk/accreditation. Accreditation evaluates only the processes used to develop content and excludes recommendations displayed by decision support systems in specific clinical settings as these are dependent on technical algorithms which are outside of the scope of NICE accreditation. Accreditation can be used to inform compliance with ISB 0129 - Clinical Safety Risk Management System - Manufacture of Health Software and ISB 0160 - Clinical Safety Risk Management System - Deployment and Use of Health Software, but cannot be used in isolation to release any product for clinical use.